

# Why teach in the East of England?

## Essex

### Living in Essex

Nearly 1.5 million people call Essex home, making it the second most populous county in England. Thanks to the size, location and geography of the county, there's a huge diversity to the places where people live. Essex has lots of different options for housing whether you're looking to rent or buy. Whether you want to live urban, rural or coastal, there are options to suit budgets of all kinds and prices that compare well to other parts of the Southeast.

The border with London is densely populated, and the South Essex Thames Gateway is an area of real economic growth. This southern part of the county is very different to the large rural areas of mid and north Essex – almost 75% of the county's land area is rolling farmland.

[Find out more](#) about living in Essex.

### Why teach in Essex?

You'll find almost 600 schools in Essex - along our stunning coastline, throughout miles of picturesque countryside and in towns and resorts with characters all of their own. This is where to search and apply for jobs in all of these primary, secondary and special schools. From teachers, school leaders and bursars to administration, catering and support staff, there's a huge range of roles, in schools that come in all shapes and sizes.

[Find out more](#) about teaching in Essex.



# West Essex

## Living and working in West Essex

West Essex covers the districts of Uttlesford, Braintree, Harlow, Epping Forest, and Chelmsford. This area is an excellent place to live and teach. It has some wonderful market towns, museums, historic sites, stately homes, nature reserves, outdoor activities, and a variety of entertainment venues to suit all ages.

If this isn't enough to convince you, there are fast public transport routes into London and rural living available in the countryside, historic market towns and suburbs. West Essex has a bit of everything.

West Essex schools all have something diverse to offer. From small village primaries to large urban comprehensives, there's a vast diversity of schools, many offer outstanding provision. County wide, the standards and expectations in Essex remain high and this is great place to learn to teach.

For those thinking of moving out of London, West Essex offers a wonderful quality of life, variety of different types of schools and more affordable property.

West Essex schools work closely together through a range of networks which support early career teachers in their training and development. There is a wonderful sense of training teachers to teach locally and supporting them to thrive and stay in this part of the county. Schools in the region invest in their staff.



# Southend

## Living and working in Southend

Southend-on-Sea is a fabulous place to live and work. There is real community strength in the family of schools that are working together in Southend to bring about the advantages that high quality education provides.

The diversity of schools in Southend is also unique for a small authority. With just 52 schools in total, contributing to the strong community approach. Our 33 primary schools are comprised of small infant schools to large primaries, including Catholic and CE faith schools. We have 6 special schools, including a BESD College that includes a PRU, and amongst our secondary schools we have 4 grammar schools, 2 Catholic high schools and high performing comprehensives.

Southend is a lively, thriving town with seven miles of award-winning beaches and coastal nature reserves. There are more than 80 parks and green spaces and 14 conservation areas. The borough is also home to the longest leisure pier in the world.

Southend-on-Sea is the one of the largest conurbations in the East of England and the closest seaside resort to London. It is located on the north side of the Thames estuary approximately 40 miles east of central London. There are two rail lines to London which is less than an hour away. Our rapidly developing London Southend Airport offers flights to a growing number of destinations throughout Europe.

[Find out more](#) about living and working in Southend.





# Thurrock

## Why teach in Thurrock?

Lying on the southern tip of Essex and against the bank of the River Thames, Thurrock is an ideal place to build your teaching career and offers a great quality of life on your doorstep.

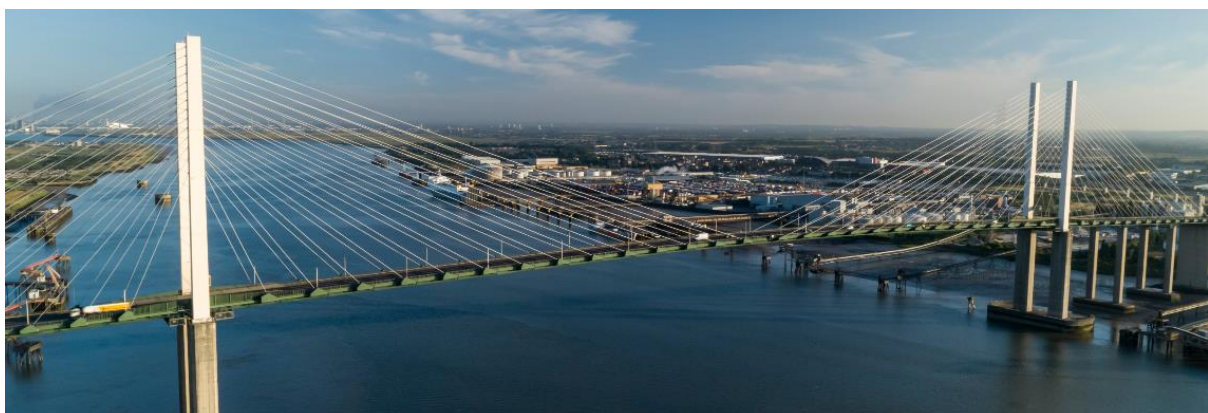
Whether you are taking your first position as an NQT, looking to take on extra responsibility, or you're keen to become a middle or senior leader, Thurrock offers you the commitment and support to deliver your ambitions. Teachers in Thurrock will experience a wide range of school settings, from village schools to town centre academies, all within a 10-mile radius.

Thurrock's education sector is a close-knit network, providing the opportunity to get to know other teachers both professionally and socially. Despite the majority of schools being academies, the local authority maintains a strong and close working relationship with all schools and is committed to continually improving standards for all its children.

High quality teachers are needed to continue the rapid improvement that Thurrock schools have achieved so far. Thurrock schools continue to improve with a large proportion of schools now judged to be good or outstanding by Ofsted.

£100 million will be invested in our schools including building two new secondary schools and improving Treetops Special Free School. The borough has several new schools and will require many additional primary and secondary school teachers and subsequently new leadership teams to support those schools.

[Find out more](#) about living in Thurrock.



# Tendring

## Living in Tendring

The Tendring peninsula is nick-named 'the Sunshine Coast' - with the long stretches of sandy beaches such as Claton, Holland-on-sea, Frinton and Walton-on-the-Naze you will never be short of a place to soak up the sunshine in a part of the UK famed for its lack of rainfall. There is plenty of entertainment on hand on the beaches too, with famous piers, boat-trips to watch seals and other wild-life and view the now iconic windfarms which grace the horizon. The Tendring area also boasts many woodlands and unspoilt stretches of countryside to walk and relax in, whilst town centres offer quirky sea-side experiences reminiscent of the heyday of the UK seaside holiday. Accommodation is very reasonable and plentiful in the Tendring area too, from quaint old English Cottages, through to Edwardian Sea front town houses, to modern developments offering all 'mod-cons'. There are strong and plentiful transport links to Colchester, London and beyond and easy access to Stansted airport.



[Find out more](#) about living in Tendring.

## Training in Tendring

The primary and secondary schools in this area offer a unique glimpse into rural and small-town life in the UK, and an opportunity to contribute to the life-chances of children and young people with less access to opportunities offered to town and city dwellers. However, this is an area that will give you fantastic experiences in the classroom and a real focus on meeting the needs of an often overlooked community within education.



# Colchester

## Living in Colchester

Training to teach in Colchester and surrounding areas offers the chance to live in or near England's oldest recorded town with its iconic castle and museums, award-winning galleries, such as First-site, and a plethora of other historic buildings and heritage locations on your doorstep where you can arrange visits and glean information to enrich your teaching and enhance your life!

Colchester town offers a vibrant and diverse shopping experience, with many independent and national chains and a lively restaurant and entertainment sector. Colchester was recently awarded city status, and opportunities to for living, working and recreation in the area are plentiful.

There are great transport links, with London and Cambridge being 1 hour by train and 2 airports (Southend and Stansted) being an easy striking distance from the town.

[Find out more](#) about living in Colchester.

## Training in Colchester

Opportunities for training are offered by highly experienced and professional local and national providers.

There are more than 70 primary schools and 19 secondary schools in the areas, and these include grammar and independent schools. Colchester has some of the country's highest achieving sixth forms in the area, and our local SEND schools are expert practitioners offering training and support to mainstream partners.

A vast majority of these schools are experienced in offering initial teacher training placements, and supporting Early Career Teachers, and local teachers rate the training and employment experiences very highly.





# Suffolk

## Living in Suffolk

Suffolk has a fast-growing reputation as a desirable place to live with its mix of vibrant towns, historic buildings, fascinating villages, expansive heath, and coast. The main town, Ipswich is rich in both agricultural and maritime history and offers an exciting quayside culture with many places to eat, drink and enjoy the waterside experience, whilst the centre of the town offers more great places to shop eat, drink, and two extensive parklands open to the public for picnics and recreation.



Ipswich is a diverse town with residents representing communities from the entire spectrum of UK ethnicities. This contributes to a vibrant culture with many opportunities to engage in rich experiences of theatre, art, culture, food, and drink. Accommodation is plentiful, affordable, and varied and transport links to London and Norwich are regular. Norwich, Stansted, and Luton airport are within striking distance.

[Find out more](#) about living in Suffolk.



## Training in Suffolk

Training in Suffolk offers the whole range of experience - from larger, town-based comprehensives, to some of the smallest rural primaries in the country. You can gain significant experience of teaching in schools where a large proportion of students have English as an Additional Language, whilst you may also teach in schools which are far smaller and geographically remote than the national average. There are great employment opportunities too, as the Suffolk area recruits over 300 Early Career Teachers every year.

# Babergh

## Living in Babergh

The Mid Suffolk and Babergh districts have some of the most beautiful countryside and interesting towns and villages in the UK. The numerous parks, open spaces and nature reserves are homes for an abundance of wildlife and many rare species. Small rural communities offer great support to new residents and an abundance of local opportunities, farmers markets, craft events, country fairs and community-based events. Accommodation is varied and reasonably priced compared to the towns and cities of the region.

[Find out more](#) about living in Babergh.

## Training in Babergh

The primary and secondary schools in this area offer a unique glimpse into rural and small-town life in the UK, and an opportunity to contribute to the life-chances of children and young people with less access to opportunities offered to town and city dwellers. However, this is an area that will give you fantastic experiences in the classroom and a real focus on meeting the needs of an often-overlooked community within education.

# Norfolk

## Why live in Norfolk?

Live in Norfolk, a beautiful county with excellent transport links and a city home to the happiest place to work in England.

Norfolk is a beautiful county with over 90 miles of unspoilt coastline, stunning countryside, the Broads and historical market towns, as well as a number of traditional seaside resorts. The county's capital, Norwich, is a cosmopolitan city mixing rich heritage with a live social and culture scene. Norwich has good







transport links with Cambridge and London. There are also direct train links to the Midlands. Norwich International Airport is located on the outskirts of the city and London is easily accessed by road via the A11. Not only that, but housing costs and the cost of living are substantially cheaper than areas such as London, making it not just a pleasant place to live, but an economically savvy one too!

[Find out more](#) about living in Norfolk.



### Why teach in Norfolk?

Teach in Norfolk and you can experience a wide range of school settings. Norfolk's educational landscape, like many other regions across the country, is diverse. A number of schools have now become academies or left to become members of academy groups.

Other schools have become free schools. Some schools have remained with Norfolk Local Authority, and these are called maintained schools. There are a number of independent (private) schools across the county, including several in the city of Norwich. Norfolk is also home to Wymondham College, the UK's largest remaining state boarding school.

Teach in Norfolk and you can make a real difference to the lives of young people in the region. Not only is the educational landscape diverse, but so too are the communities which these schools serve. In Norfolk, 15 areas are among the richest 10% in the country, while 3 are in the poorest 10%. This disparity is a key focus for the schools in these areas and their leaders.

# Cambridgeshire and Peterborough

## Living in Cambridgeshire and Peterborough

From the beautiful, richly fertile fen and countryside of the north and east of the county to the vibrant diversity of our two cities, Cambridgeshire and Peterborough is a special part of the UK. Much of the county is made of a booming agricultural community, supported by busy market towns, but with centres of innovation in medical and healthcare technology, two cathedrals (in Ely and Peterborough) and two universities in Cambridge, there is a wide variety of opportunity in our thriving and diverse communities.

## Training in Cambridgeshire and Peterborough

Just like the county itself there is a wide range of schools in Cambridgeshire and Peterborough, ranging from the tiniest, rural primaries to large, inner-city academies, and everything in between.

There are a range of teacher training providers, in both university and school sectors, with a very long history of learning, and strong links to a thriving network of partnership schools. No wonder so many people who train in Cambridgeshire and Peterborough stay there!





# Bedfordshire

## Living in Bedfordshire

Rich in natural beauty and with a wealth of historical villages and towns to explore, Bedfordshire is a popular choice for people to live. Bedford is a welcoming and diverse historical market town, situated on the River Great Ouse. The county offers a mix of rural and urban environments and housing to suit all lifestyles and budgets. You can find picturesque countryside as well as towns and cities, providing a balance for those who enjoy both lifestyles.



Excellent transport links to Oxford, Cambridge and Milton Keynes mean that you can enjoy the tranquillity and scenery of country living, but the bright lights of the cities are only a short drive away. Easy access to London is provided by a direct train line to the capital, and Luton International Airport offers daily flights to 30 different countries across Europe, the Middle East and North Africa.



## Training in Bedfordshire

Opportunities for training are offered by highly experienced and professional local and national providers. Training in Bedfordshire offers a wide range of experiences. Parts of the county still operate a three-tier system of lower, middle and upper schools. You can train in large, city-based comprehensives, small rural primaries schools or purpose-built sixth-form colleges. There is also the opportunity to gain experience of teaching students who have English as an Additional Language in this diverse and welcoming county.

# Hertfordshire

## Living in Hertfordshire

Hertfordshire sits North of London and has excellent transport links into the city and north in addition to having two international airports close by. The county has so much to offer in terms of historical market towns, beautiful villages and stunning countryside. The county is home to a number of popular towns including Watford, St. Albans, Hemel Hempstead, Potters Bar, Hatfield, Stevenage and Hertford in addition to the first garden cities of Letchworth and Welwyn.







Hertfordshire is recognised as a vibrant, safe place to bring up a family, with plenty on offer within the county and close by. The ease of links into London for entertainment and shopping makes it a very popular place to live.

### **Training in Hertfordshire**

The schools in Hertfordshire have a reputation for outstanding results, high-quality teaching and well-resourced schools. Our schools range from small rural primaries to large urban secondaries, and we have outstanding provision for special schools, alternative provision and early years. There is an established network of schools that provide exceptional placements for initial teacher training with experienced training providers ranging from school-based to university provision.

Hertfordshire prides itself on its reputation for exceptional professional development across the county. The majority of colleagues training in our schools stay in the county for their whole careers and are able to access world class training opportunities to progress their own professional development. Teachers form strong networks across the county and are supported at all stages of their career.





# Train to Teach

## East of England

### Find your local Teaching School Hub

**Alban Teaching School Hub** – covering Dacorum, Hertsmere, St Albans and Harpenden, Three Rivers, Watford and Welwyn Hatfield

**Alpha Teaching School Hub** – covering Babergh, Colchester, Ipswich and Tendring

**Chafford Hundred Teaching School Hub** – covering Basildon, Brentwood, Castle Point, Maldon, Rochford, Southend-on-Sea and Thurrock

**Chiltern Teaching School Hub** – covering Broxbourne, East Hertfordshire, Luton, North Hertfordshire, Stevenage, Bedford, Central Bedfordshire and Milton Keynes.

**Inspiration Teaching School Hub** – covering Breckland, Great Yarmouth, South Norfolk and East Suffolk (Waveney)

**Julian Teaching School Hub** – covering Broadland, King's Lynn, West Norfolk, Norfolk Norfolk and Norwich

**Saffron Teaching School Hub** – covering Braintree, Chelmsford, Epping Forest, Harlow and Uttlesford

**Unity Teaching School Hub** – covering Mid Suffolk, West Suffolk and East Suffolk

# Train to Teach

## East of England

Provider	Page	Provider	Page
Advance Teacher Training	<a href="#">16</a>	NIoT @ Harris Initial Teacher Training	<a href="#">23</a>
NIoT @ Alban TSH	<a href="#">16</a>	NIoT @ Inspiration Trust	<a href="#">23</a>
ATTI	<a href="#">17</a>	NIoT @ Ormiston Teacher Training	<a href="#">24</a>
Bedfordshire School Training Partnership	<a href="#">17</a>	Norfolk Teacher Training Centre (NTTC)	<a href="#">24</a>
Benfleet TSA (with TES)	<a href="#">18</a>	Plume Community Teaching Partnership	<a href="#">24</a>
Bishop's Stortford ITT (CTG)	<a href="#">18</a>	Reach Teach	<a href="#">25</a>
Bishop Grosseteste University	<a href="#">19</a>	Teach East	<a href="#">25</a>
Cambridge Partnership	<a href="#">19</a>	TES Institute	<a href="#">25</a>
Chiltern Group Training	<a href="#">20</a>	The Tommy Flowers SCITT	<a href="#">26</a>
CTSN	<a href="#">20</a>	Two Mile Ash ITT (CTG)	<a href="#">27</a>
Colchester Teacher Training Consortium	<a href="#">21</a>	University of East Anglia	<a href="#">27</a>
East SCITT	<a href="#">21</a>	University of Bedfordshire	<a href="#">28</a>
Essex and Thames SCITT	<a href="#">21</a>	University of Cambridge	<a href="#">28</a>
Essex Schools ITT (with TES)	<a href="#">22</a>	University of Hertfordshire	<a href="#">29</a>
Mid Essex Teacher Training	<a href="#">22</a>	West Essex SCITT	<a href="#">29</a>
NESTT (Norfolk, Essex and Suffolk Teacher Training)	<a href="#">23</a>		



# Train to Teach

## East of England

### Advance Teacher Training (Ambition Institute)



**Area:** Tendring, Colchester and Braintree

**Upcoming Events** - Find our recruitment event details on our website below.



01255 431949



[sarah.alix@advanceteach.org.uk](mailto:sarah.alix@advanceteach.org.uk)



[www.advanceteach.org.uk](http://www.advanceteach.org.uk)



### NIOT@Alban TSH

**Area:** Dacorum, St Albans, Harpenden, Welwyn Garden City; Hatfield, Hertsmere, Three Rivers.

**Tuesday Dec 12th, 2023 - 11:30**

[Register](#) in advance for this meeting

**Thursday Jan 11th, 2024 - 18:00**

[Register](#) in advance for this meeting

Please visit our [website](#) for more information



01727 799560 ext 4217



[enquiries@albantsh.co.uk](mailto:enquiries@albantsh.co.uk)



<https://albantsh.co.uk/itt-welcome/>

## Academy Transformation Trust Institute (Ambition Institute)



**Area:** Norfolk and Suffolk

### Upcoming Events

Wednesday 28<sup>th</sup> February 2024 at 4pm- 5pm.

[Sign up for online event - Train to Teach with ATT Institute](#)

 **07858 687655**

 [Katie.pattinson@attrust.org.uk](mailto:Katie.pattinson@attrust.org.uk)

 <https://www.academytransformationtrust.co.uk/institute/initial-teacher-training/>

## Bedfordshire Schools Training Partnership



**Area:** South East Essex & Southend-on-Sea (Basildon, Benfleet, Canvey, Hockley, Leigh-on-Sea, Rayleigh, Rochford, Shoeburyness, Southend-on-Sea, Wickford, Westcliff)

### Upcoming Events

Thursday 7th December (Greenacre – Bedford)

Wednesday 13th December (Putnoe Primary School – Bedford)

Thursday 25th January (Bedford Free School or Mark Rutherford – Beds)

Tuesday 26th March (Bedford Academy – Beds)

Wednesday 24th April (Wootton Lower School – Beds)

Thursday 23rd May (Kempston Academy – Beds)

Monday 24th June (Brickhill Primary School – Beds)

Tuesday 16th July (St Thomas More Secondary School – Bedford)

 **01582 493680**

 [anna.rogers@ctg.ac.uk](mailto:anna.rogers@ctg.ac.uk)

 <https://www.ctg.ac.uk/> <https://www.bstp.uk.com/>

## Benfleet Team Supporting All (BTSA)



**Area:** South East Essex & Southend-on-Sea (Basildon, Benfleet, Canvey, Hockley, Leigh-on-Sea, Rayleigh, Rochford, Shoeburyness, Southend-on-Sea, Wickford, Westcliff)

**Monday 11<sup>th</sup> December at 7pm** - Zoom

Register in advance to join this meeting [here](#)

After registering, you will receive a confirmation email containing information about joining the meeting.

**Monday 22<sup>nd</sup> January 2024 at 7pm** - Kingston Primary School, Church Road, Thundersley SS7 3HG. Follow [this link](#) to register



01268 794215 ext 210



[mhoward@theappletonschool.org](mailto:mhoward@theappletonschool.org)



<http://www.btsa.uk>



## Bishop's Stortford Initial Teacher Training (Chiltern Training Group)



**Area:** Bishop's Stortford, Sawbridgeworth

### Upcoming Events

Please see our social media for details of our upcoming recruitment events.



01582 493680



[anna.rogers@ctg.ac.uk](mailto:anna.rogers@ctg.ac.uk)



<https://www.bsetscitt.co.uk/>



## Bishop Grosseteste University



BISHOP  
GROSSETESTE  
UNIVERSITY

**Area:** Lincoln, Gainsborough, Doncaster, Scunthorpe, Cleethorpes, Grimsby, Louth, Market Rasen, Sleaford, Horncastle, Skegness, Newark, Nottingham, Spalding, Grantham, Peterborough, Cambridgeshire, Boston, Norfolk.

### Upcoming Events

6<sup>th</sup> December 2023

24<sup>th</sup> January 2024 (Virtual open day)

22<sup>nd</sup> February 2024 (Open evening for PGCE and MA courses)

8<sup>th</sup> June 2024



01522 583658



[enquiries@bishopg.ac.uk](mailto:enquiries@bishopg.ac.uk)



[BGU Bishop Grosseteste University Lincoln: Your Journey Star](#)

## The Cambridge Partnership



The Cambridge  
Partnership

**Areas:** Cambridgeshire, Peterborough, West Norfolk, South Lincs, Northants, Bedfordshire



01223491631



[rdavies@campartnership.org](mailto:rdavies@campartnership.org)



<https://campartnership.org>

## Chiltern Training Group

**Area:** Luton, Dunstable, Central Beds



### Upcoming Events

Wednesday 13th December - Chantry Primary School - Luton

Thursday 25th January – Queensbury - Dunstable

Monday 26th February – Houstone - Luton

Tuesday 26th March - Chiltern Academy - Luton

Wednesday 24th April - Norton Road Primary School - Luton

Thursday 23rd May - Icknield High School - Luton

Monday 24th June - Wigmore Primary School - Luton

Tuesday 16th July - Cardinal Newman High School - Luton



01582 493680



[anna.rogers@ctg.ac.uk](mailto:anna.rogers@ctg.ac.uk)



<https://www.ctg.ac.uk/>

## CTSN SCITT

**Area:** Cambridgeshire, Suffolk and Essex



### Upcoming Events

Mon 20 <sup>th</sup> November CTSN & EPS train to teach information event	<a href="https://www.eventbrite.co.uk/e/ctsn-scitt-train-to-teach-november-information-event-tickets-726810227957?aff=oddtcreator">https://www.eventbrite.co.uk/e/ctsn-scitt-train-to-teach-november-information-event-tickets-726810227957?aff=oddtcreator</a>	
Fri 1 <sup>st</sup> December CTSN & EPS train to teach information event	<a href="https://www.eventbrite.co.uk/e/ctsn-scitts-train-to-teach-coffee-chat-event-tickets-726824340167?aff=oddtcreator">https://www.eventbrite.co.uk/e/ctsn-scitts-train-to-teach-coffee-chat-event-tickets-726824340167?aff=oddtcreator</a>	

Thu 14<sup>th</sup>  
December  
CTSN & EPS  
train to teach  
information  
event

<https://www.eventbrite.co.uk/e/ctsn-scitts-train-to-teach-coffee-chat-event-tickets-726833477497?aff=oddtcreator>



01223 262503 (EXT 223)



[scitt@catrust.co.uk](mailto:scitt@catrust.co.uk)



<https://ctsncscitt.info>

## Colchester Teacher Training Consortium (CTTC)

Area: Essex: Colchester and surrounding villages, Coggeshall, Tiptree, Tendring, Southend  
Suffolk: Ipswich, Babergh Centre based training in Colchester and Ipswich



## Essex and Thames SCITT

**Area:** Essex, Thurrock, Southend

### Upcoming Events

All our recruitment events can be found at [www.etpscitt.co.uk](http://www.etpscitt.co.uk). If any candidates would like a one to one chat please give us a call on 01268 988580



01268 380025



[karon@etpscitt.co.uk](mailto:karon@etpscitt.co.uk)



[www.etpscitt.co.uk](http://www.etpscitt.co.uk)





### Upcoming Events

CTTC Open Evening – 24/01/2024

CTTC Open Evening – 23/04/2024



01206 364728



[enquiries@colchesterttc.org.uk](mailto:enquiries@colchesterttc.org.uk)



<https://www.colchesterttc.org.uk/>

### East SCITT

**Area:** Suffolk, Norfolk, Essex



01473 624855 (EXT 1254)



[kerensacarrick@eastscitt.co.uk](mailto:kerensacarrick@eastscitt.co.uk)



[www.eastscitt.co.uk](http://www.eastscitt.co.uk)



### Essex Schools ITT (with Tes)

**Area:** Epping Forest; Harlow; Chelmsford; Havering & Brentwood



**ESSEX SCHOOLS ITT**  
with  tes

### Upcoming Events

28<sup>th</sup> November Recruitment Evening Zoom 7.30-9.00pm

<https://us06web.zoom.us/j/88075231956?pwd=5aexikiJaO7wy41ICah71eBboL5zEL.1>

Meeting ID: 880 7523 1956 Passcode: 231225

Contact Form = <https://forms.gle/LPRvRescszShAmhY7> We'd love to invite you in for a chat at a school local to you.



02084 986718



[teach@essexschoolsitt.com](mailto:teach@essexschoolsitt.com)



[www.essexschoolsitt.com](http://www.essexschoolsitt.com)



## Mid Essex Teacher Training



**Area:** Braintree, Billericay, Brentwood, Chelmsford, Coggeshall, Great Dunmow, Halstead, Heddingham, Hockley, Maldon, Ongar, Shenfield  
Core training in Braintree



01376 556340



[sophie.allchin@midessexteachertraining.com](mailto:sophie.allchin@midessexteachertraining.com)



[www.midessexteachertraining.com](http://www.midessexteachertraining.com)

## NESTT

**Area:** Norfolk, Essex and Suffolk



**Norfolk Essex Suffolk  
Teacher Training**  
nurture·empower·teach

### Upcoming Events

Regular online recruitment events are held throughout the year: <https://nestt.org.uk/events-2/>



Essex Office 01268 477611 and Suffolk and Norfolk Office 01473 265077



[enquiries@nestt.org.uk](mailto:enquiries@nestt.org.uk)



<https://nestt.org.uk/>

## NIoT @ Harris Initial Teacher Training



**Harris Federation**  
Initial Teacher Education

**Area:** London

### Upcoming Events

Train to Teach with NIoT @ Harris Initial Teacher Education  
[NIoT@Harris Initial Teacher Education Events | Eventbrite](#)  
December 6<sup>th</sup>, December 11<sup>th</sup>, more coming up – click the link



0330 133 6300



[itt@niot.org.uk](mailto:itt@niot.org.uk)



[www.niot.org.uk](http://www.niot.org.uk)



## NIoT @ Inspiration Trust

**Area:** Norfolk and Suffolk



01603 733446



[inspirationteachinghub@inspirationtrust.org](mailto:inspirationteachinghub@inspirationtrust.org)



[www.inspirationteachingschoolhub.org /](http://www.inspirationteachingschoolhub.org/)  
[www.niot.org.uk](http://www.niot.org.uk)

**inspiration  
trust**



## NIoT @ Ormiston Teacher Training

**Area:** Norfolk and Suffolk



01787 375131



[oaks\\_suffolk@ormistonsudbury.co.uk](mailto:oaks_suffolk@ormistonsudbury.co.uk)



[www.theoaks.org.uk](http://www.theoaks.org.uk)

**[ORMISTON]**  
TEACHER TRAINING



## Norfolk Teacher Training Centre

**Area:** Norfolk and Suffolk

### Upcoming Events

Teacher Training Open Evening  
9<sup>th</sup> January and 12<sup>th</sup> March 2024 (5.30 – 7.00)  
To attend this event, please register [here](#).



01603 773302



[Jacqui.waring@ccn.ac.uk](mailto:Jacqui.waring@ccn.ac.uk)



<https://www.norfolkttc.org.uk>





## Plume Community Teaching Partnership

**Area:** Maldon, Burnham, Chelmsford and North Essex

### Upcoming Events

Monday 20 November 6pm-6.30pm

[Zoom link](#)

Monday 11 December 6pm-6.30pm – Please email [ITT@plume.essex.sch.uk](mailto:ITT@plume.essex.sch.uk) or call 01621 854621



01621 854681



[ITT@plume.essex.sch.uk](mailto:ITT@plume.essex.sch.uk)



[www.plumeitt.co.uk](http://www.plumeitt.co.uk)



## Reach Teach

**Area:** National Provider

**Upcoming Events** [here](#)



01332 473827



[reachteach@reach2.org](mailto:reachteach@reach2.org)



[www.reachteach.org](http://www.reachteach.org)



## Teach East

**Area:** Peterborough



01733 252235



[hsauntson@teacheast.org](mailto:hsauntson@teacheast.org)



[www.teacheast.org](http://www.teacheast.org)



## TES Institute

Area: National



**Tes Institute** works in partnership to deliver ITT School Direct and Teacher Apprenticeships with the following partners:

**Essex School ITT** – <https://www.tes.com/institute/itt-lead-partners> and <https://www.essexschoolsitt.com/>

**Benfleet Team Supporting All** – Benfleet, Basildon, Canvey and Southend

**Thurrock Teacher Training Company** – <https://www.tes.com/institute/itt-lead-partners> and <https://www.st-cleres.thurrock.sch.uk/198/welcome-to-thurrock-teacher-training>

**Havering Train to Teach** – [https://haveringtrain2teach.com/?page\\_id=6](https://haveringtrain2teach.com/?page_id=6)

**Havering Teacher Training Partnership**– <https://www.haveringteachertraining.co.uk/>

**Plume Community Partnership** – <https://www.tes.com/institute/itt-lead-partners> and <https://www.plumeitt.co.uk/>

[Find our partners.](#)



[itt.institute@tes.com](mailto:itt.institute@tes.com) & [apprenticeships@tes.com](mailto:apprenticeships@tes.com)



<https://www.tes.com/institute/courses/initial-teacher-training-itt>

## The Tommy Flowers SCITT

Area: Milton Keynes, North Bucks, South Northamptonshire, Bedfordshire



THE  
TOMMY  
FLOWERS  
SCITT

### Upcoming Events

For more information and to register, click [here](#).

#### Information Evenings

Thursday 16th November 2023 at 5.15pm

Tuesday 12th December 2023 at 5.15pm

Thursday 11th January 2024 at 5.15pm

Thursday 15th February 2024 at 5.15pm

Tuesday 19th March 2024 at 5.15pm

Tuesday 7th May 2024 at 5.15pm

at St Paul's Catholic School, Phoenix Drive, Leadenhall, Milton Keynes MK6 5EN



01908 669735 ext.310



[TFSCITT@st-pauls.org.uk](mailto:TFSCITT@st-pauls.org.uk)



<https://tommyflowersscitt.co.uk/>

## Two Mile Ash ITT

**Area:** Bedfordshire, Milton Keynes, Luton, Bletchley

### Upcoming Events

Find out more about recruitment events [here](#).



01582 493680



[anna.rogers@ctg.ac.uk](mailto:anna.rogers@ctg.ac.uk)



<https://www.ctg.ac.uk/> <https://www.mkitt.co.uk/>

## University of East Anglia

**Area:** Norfolk, Suffolk, Cambridgeshire and Essex



**SCHOOL OF  
EDUCATION  
AND LIFELONG  
LEARNING**

### Upcoming Events

For more information and to register, click [here](#).

Primary PGCE Information Session  
Saturday 4<sup>th</sup> November 2023 – 9.30-12.30

Secondary PGCE Information Session  
Tuesday 7<sup>th</sup> November 2023, 16:00 - 19:00



01603 591451



[edu.reception@uea.ac.uk](mailto:edu.reception@uea.ac.uk)



[PGCE Initial Teacher Education - School of Education and Lifelong Learning - About \(uea.ac.uk\)](https://uea.ac.uk)



## University of Bedfordshire

**Area:** Cambridgeshire, northwest Essex, northeast Hertfordshire, west Suffolk and Peterborough

### Upcoming Events

Open Days: Sat 18 Nov 2023; Sat 20 April 2024; Wed 3 July 2024

Open Evenings (virtual): Wed 6 Dec 2023; Wed 22 May 2024

Open Evening (face to face): postgraduate only Wed 17 July 2024

<https://www.beds.ac.uk/open-days/>



01234 793065



[educationservices@beds.ac.uk](mailto:educationservices@beds.ac.uk)



<https://www.beds.ac.uk/howtoapply/departments/education/courses/>

## University of Cambridge

**Area:** Cambridgeshire, northwest Essex, northeast Hertfordshire, west Suffolk and Peterborough



UNIVERSITY OF  
CAMBRIDGE

### Upcoming Events

Sign up for our events mailing list here: <https://forms.office.com/e/WtdttCH5SN>

Or visit our website



[pgce-enquires@educ.cam.ac.uk](mailto:pgce-enquires@educ.cam.ac.uk)



<https://www.educ.cam.ac.uk/courses/pgce/>

## University of Hertfordshire

**Area:** Hertfordshire, Bedfordshire, Buckinghamshire, Essex, North London

University of  
Hertfordshire **UH**

### Upcoming Events

Book a place at one of our recruitment events

<https://www.herts.ac.uk/study/open-days-and-events>

 [+44 \(0\)1707 284000](tel:+441707284000)

 [ITE@herts.ac.uk](mailto:ITE@herts.ac.uk)

 <https://www.herts.ac.uk/study/schools-of-study/education/initial-teacher-education>


## West Essex SCITT

**Area:** Epping Forest, Waltham Forest, Redbridge, Hertfordshire, East London, North West Essex and West Essex



### West Essex SCITT Events

Get into Teaching coffee mornings held in Epping Forest Schools Partnership Trust schools - dates to be announced soon

 020 8504 2934 (option 6)

 [smarbe@efspt.org](mailto:smarbe@efspt.org)

 <https://www.westessexscitt.co.uk>